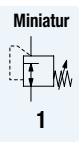
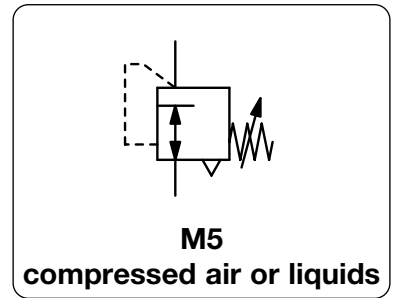


MICRO PRESSURE REGULATOR

MAR



Description	Piston-operated compact pressure regulator with special seals for applications in the chemical and medical industry. Mounting nut included.
Media	compressed air, non-corrosive gases or liquids
Supply pressure	max. 21 bar
Adjustment	by knurled-head screw
Relieving function	relieving or non-relieving
Gauge port	not available
Mounting position	any
Temperature range	0 °C to 80 °C / 32 °F to 176 °F for NBR/Buna-N 0 °C to 110 °C / 32 °F to 230 °F for EPDM for appropriately conditioned compressed air down to -30°C / -22°F
Material	Body: brass Elastomer: NBR/Buna-N, optionally FKM or EPDM Inner valve: stainless steel and brass



Dimensions			Description	Flow rate l/min*1	Connection thread		Pressure range bar	Order number
A	B	A/F			Inlet	Outlet		
mm	mm	mm			M5 / NPT	M5 / 10-32"		

Regulator with male thread

supply pressure max. 21 bar

MAR-1P

18	71	9.5	relieving	120	1/8" NPTa	10-32"	0.2 ... 1.4	MAR-1P-20
							0.2 ... 3.5	MAR-1P-50
							0.2 ... 7.0	MAR-1P
18	71	9.5	non-relieving	120	1/8" NPTa	M5	0.2 ... 1.4	MAR-1PNR-20
							0.2 ... 3.5	MAR-1PNR-50
							0.2 ... 7.0	MAR-1PNR



MAR-1P, with male thread

Regulator with female thread

supply pressure max. 21 bar

MAR-1

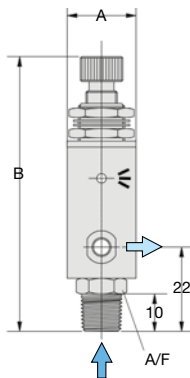
18	65	9.5	relieving	120	M5	M5	0.2 ... 1.4	MAR-1-20
							0.2 ... 3.5	MAR-1-50
							0.2 ... 7.0	MAR-1
18	65	9.5	non-relieving	120	M5	M5	0.2 ... 1.4	MAR-1NR-20
							0.2 ... 3.5	MAR-1NR-50
							0.2 ... 7.0	MAR-1NR



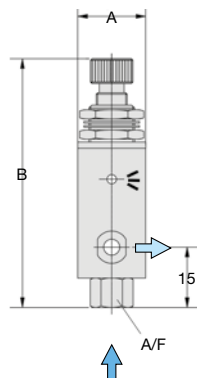
MAR-1, with female thread

Special options, add the appropriate letter

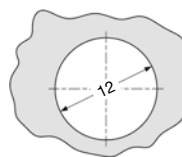
for oxygen	specialy cleaned, with oxygen grease	MAR- . NR- .. 15
FKM elastomer		MAR- V
EPDM elastomer		MAR- E
chemically nickel-plated	throughout	MAR- X13



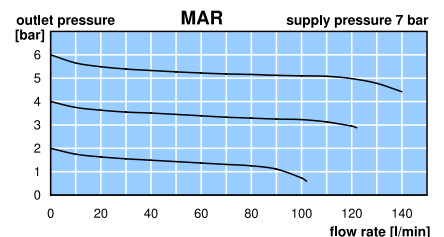
MAR-1P



MAR-1



panel cut-out



*1 at 7 bar supply pressure, 6 bar outlet pressure and 1 bar pressure drop

PDF CAD
www.aircom.net



Order example:
MAR-1P-20